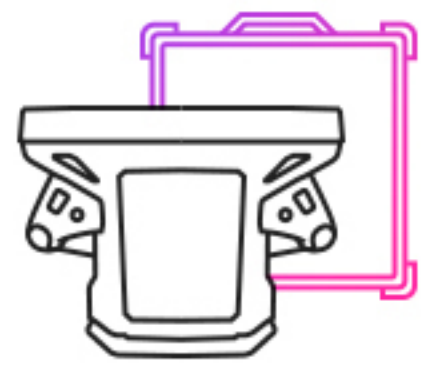


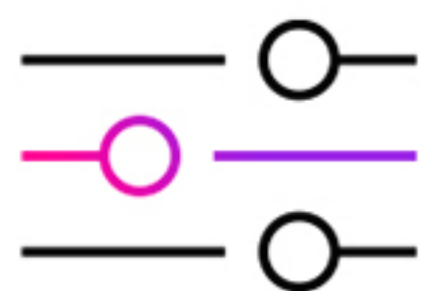
MTP

Modular
TRANSMISSION
panel
MULTI-IMAGING
Technology



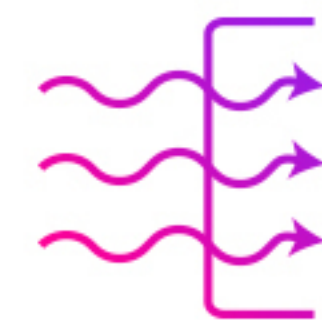
IDENTIFY MORE OBJECTS

Capture both high-resolution transmission images and backscatter images at the same time, allowing operators to see more with one scan without the need to switch tools.



ROBUST IMAGE ENHANCEMENT FILTERS

Get the most out of every scan with easy to use image enhancement filters that optimize for all common scenarios.



SEE THROUGH MORE MATERIAL

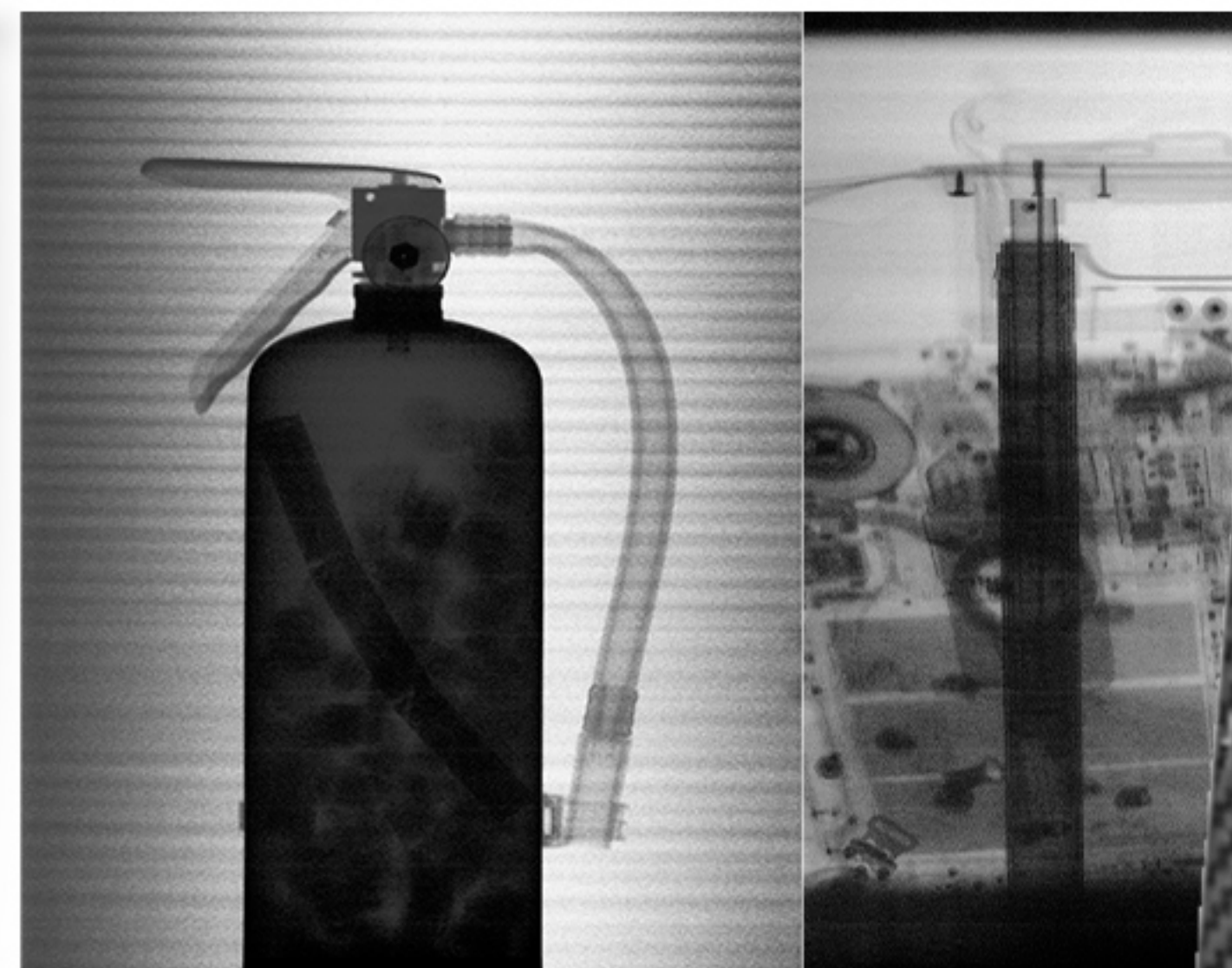
See through more material than just backscatter. 20mm of steel with the PX1, 25mm of steel with the PX Ultra, and up to 30mm of steel with PXT.



FAST & FLEXIBLE POSITIONING

Completely wireless with multiple positioning and fixturing options that allow operators to scan areas that traditional c-arm X-ray systems can't reach.

DETECT MORE ANOMALIES - SEE THROUGH MORE MATERIALS -
MTP+



You have **THE MISSION**
we have **THE VISION**



MTP+ Model Specifications

modular transmission Detector Panel

SYSTEM overview

1 Compatible with all **Videray Scanners**

2 **Portable**, lightweight, rugged design



3 **Wireless** image transfer

4 **High quality** and resolution images

5 Deploy anywhere **in seconds**

6 **All-day** battery life



	 MTP+1417i	 MTP+1013i
IMAGE QUALITY	15M pixels 100 µm pixel pitch 5ip/mm resolution	8.3M pixels 100 µm pixel pitch 5ip/mm resolution
IMAGING AREA	350 x 430 mm	250 x 330 mm
DIMENSIONS	L 46 cm (18.11 in) W 38.4 cm (15.12 in) H 1.5 cm (0.59 in)	L 36.2 cm (14.25 in) W 26.9 cm (10.59 in) H 1.6 cm (0.63 in)
WEIGHT*	4kg (8.8 lbs)	2.2kg (4.85 lbs)
BATTERY	2 batteries (Li-ion Polymer) 5+ hours per battery 1-Bay Rapid Charger	2 batteries (Li-ion Polymer) 8+ hours per battery 1-Bay Rapid Charger
TRANSPORTATION CASE	Lockable hard case with wheels (IP67, MIL-SPEC). Length: 64.5 cm (25.4 in) Width: 50.8 cm (20 in) Height: 36.8 cm (14.5 in) *Weight: 15.4 kg (34 lbs)	Lockable hard case with wheels (IP67, MIL-SPEC). Length: 60.4 cm (23.8 in) Width: 39.3 cm (15.5 in) Height: 33.5 cm (13.2 in) *Weight: 12.2 kg (27 lbs)

*Weight with battery

COMMON Specifications

SYSTEM

- 5G Wifi (802.11.ac), no external antenna
- Continuous AC power option
- GigE Wired
- Scintillator: DRZ-Fine

ENVIRONMENT

- Ingress protection: IP67
- Operating temperature: -10 °C (14 °F) to 50 °C (122 °F)
- Operating humidity: 5 to 90 %RH

STANDARD ACCESSORIES

- Two (2) rechargeable batteries
- 1-Bay Rapid charge
- Removable handle
- Vertical stand
- Mounting strap
- Power cord