

PX SERIES



POWERFUL ADD ONS



MTP+

See even more with our high definition transmission panels capable of penetrating more than 25 mm of steel. Deploy in seconds, capture both BX and TX image at the same time, and scan areas traditional c-arms can't reach.

VISION RGD TABLET

Wireless secondary viewing station that allows other operators to view images in real time or browse previous images.



VISION COMMAND

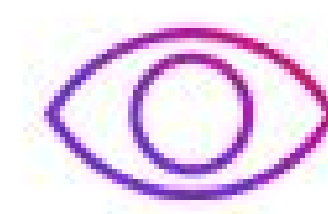
Quick and easy cloud backup of all device images. View and interact with images on any device with a web browser.



The most *advanced*
generation of true
portable inspection
technology

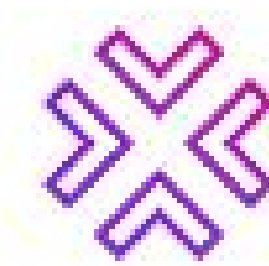


Handheld backscatter X-RAY IMAGER



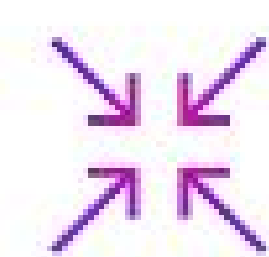
Industry leading image quality

See through more material, and easily identify anomalies in more scenarios by leveraging our automated image enhancement algorithms, increased power, penetration mode, and vast suite of image filters.



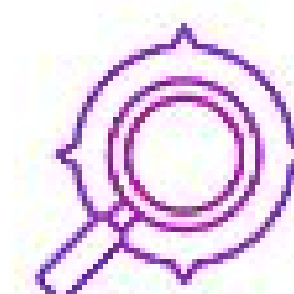
Unparalleled Safety

Our patented revolutionary shielding protects operators from leakage and scatter radiation and exceeds all industry safety standards without compromising on image quality or device size and weight.



Compact and light weight

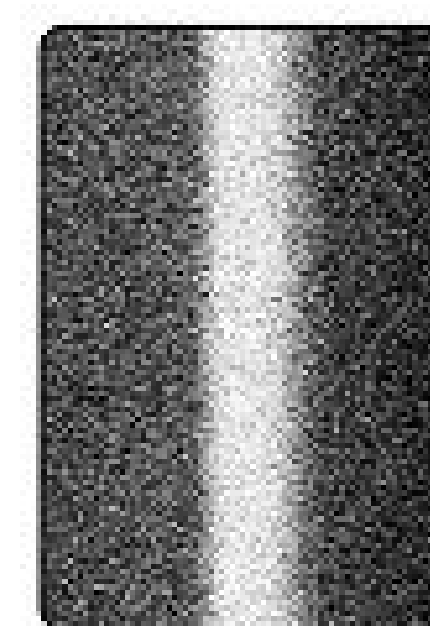
Go anywhere, inspect hard to reach areas, and avoid operator fatigue with the smallest and lightest weight scanner on the market.



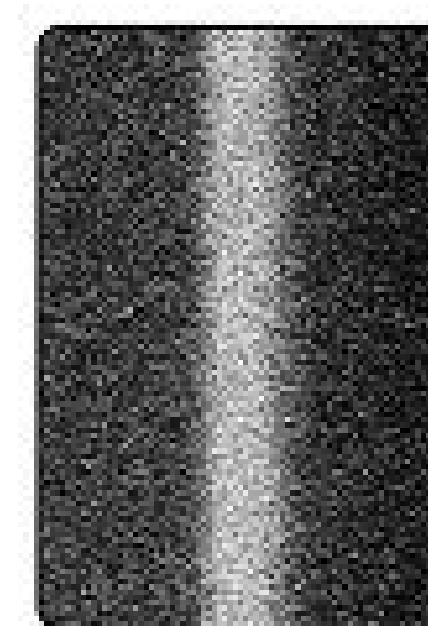
Faster and easier inspections

With a 7" ultra-bright touchscreen, intuitive software interface, extended battery life, and quick action buttons built into the handles operators can do inspections faster both indoors and outdoors without the need for additional accessories.

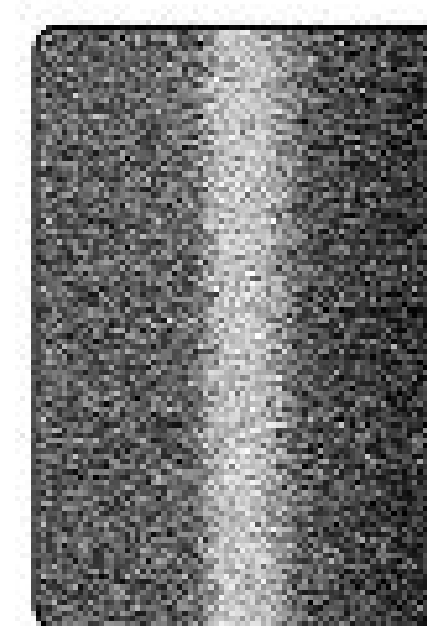
BX Steel Penetration of Organic behind Stainless Steel using PX Ultra Model



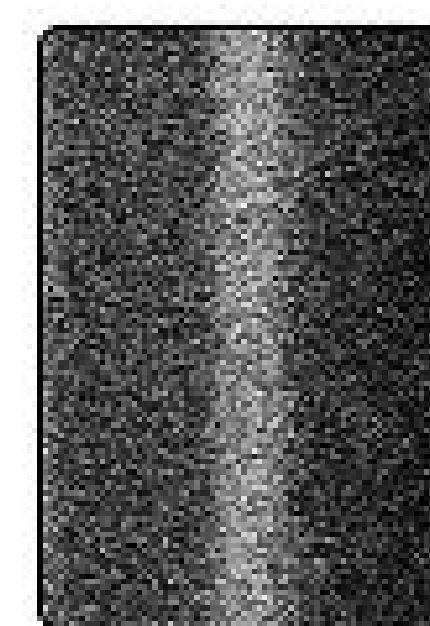
8mm



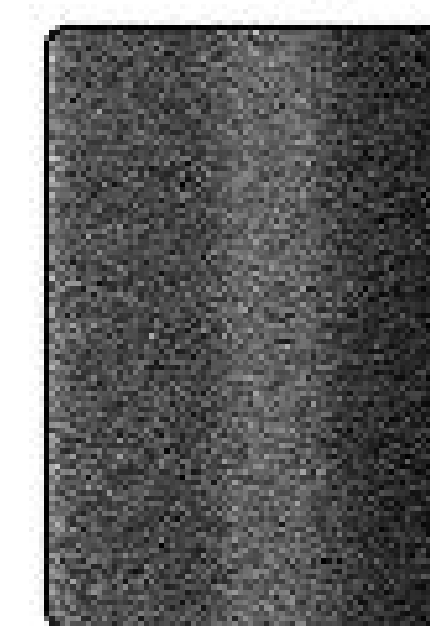
9mm



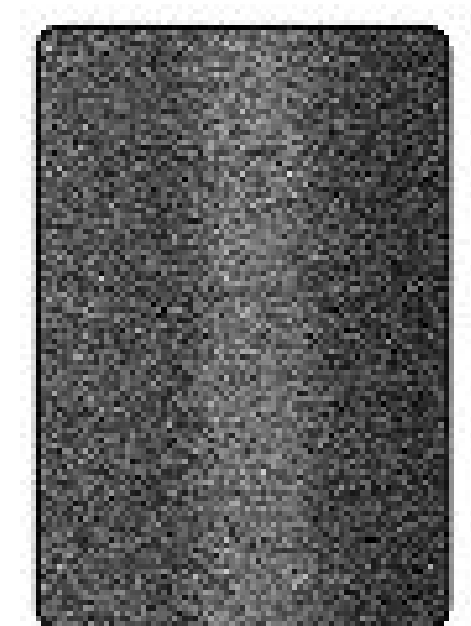
10mm



11mm



12mm



13mm

YOU HAVE THE MISSION
WE HAVE THE VISION



info@videray.com +1 (617) 286-3966 Videray.com 529 Main St, Suite 100, Charlestown, MA 02129

WARNING: CLASS 1 (IEC 60825-1:2014) LASER PRODUCT. DO NOT EXPOSE USERS TO TELESCOPIC OPTICS



MODEL SPECIFICATIONS

	PX ULTRA (APX)	PX1 (APX)
X-RAY SOURCE	160kV / 10W	140kV / 10W
STEEL PENETRATION AT IDEAL CONDITIONS & PARAMETERS	13 mm	11 mm
WEIGHT*	4.9kg (10.8 lbs)	4.5kg (9.9 lbs)
IMAGING	<ul style="list-style-type: none"> VISION 5.0 Auto Image Optimization Scenario Specific Scanning Modes More than 10 colorization filters including (inverse, thermal, etc) Image Compare & Stching up to 8 images in one 	
CAMERA	13MP Color Front Facing	
POWERFUL ADD ONS	<ul style="list-style-type: none"> MTP+ RGD Vision Tablet Vision Command 	

*WEIGHT WITH BATTERY

COMMON SPECIFICATIONS

IMAGING & INSPECTION ADVANTAGES

- Lead Imaging Capability Detection
- Integrated Active 7" 1200x1920 FHD 2500 nits, Color Touchscreen
- Two (2) Action buttons on each handle
- Save 25,000 - 200,000 images based on storage configuration
- Wireless & Wired Image transfer
- Configurable Scanning Speeds (3.75cm to 45cm per sec)
- Configurable up to 60 sec max scan
- Field of view alignment dual line lasers
- Real time remote visualization capability

STANDARD ACCESSORIES

- Two (2) rechargeable batteries
- 1-Bay rapid charger
- Quick connect adjustable wrist & shoulder straps
- USB-C Data transfer cable
- Lockable transport case (IP67, MIL-SPEC, Airline carry-on)
- Quick start guide & operators manual

** Additional accessories available for purchase

OPERATING CONDITIONS

- Ingress Protection: IP54
- Operating Temperature: - 4F (-20C) to 140F (60C)
- Operating humidity: 0% to 95%
- Storage Temperature: -40F (-40C) to 158F (70C)

SAFETY

- Revolutionary & patented built-in shielding
- Visual indicator lights and interlocks to prevent inadvertent X-ray emission
- Password required for operation
- Configurable Single/Dual Trigger Modes
- Front facing flashlights
- Contains no live radiation source

COMPLIANCE

- CE and RoHS compliant
- UL Compliant
- HPS Compliant
- Compliant with all applicable U.S. Federal health and safety standards.
- ANSI, ICRP, NCRP and Euratom radiation

SYSTEM

- Android 14 Operating System
- USB-C, USB 3.0, Wi-Fi, GPS, and Bluetooth Connectivity
- Multi-Language User Interface
- 5G Onboard Modem or 4G/5G Hotspot Compatibility
- *Requires external cellular plan
- Storage: 128GB, configurable up to 1TB

TRANSPORT CASE OPTIONS

- Lockable hard case: (IP67, MIL-SPEC, Airline carry-on)
- Length: 53,54 cm (21 in)
- Width: 44,45 cm (17.5 in)
- Height: 35,56 cm (14 in)
- Other hard case options available
- Tactical backpack

SUPPORT

- Complementary Over-the-Air (OTA) Software Updates
- Complementary Email/Phone Support
- Virtual and On-site Training available
- Standard 1-year warranty included
- Extended warranty available

BATTERIES

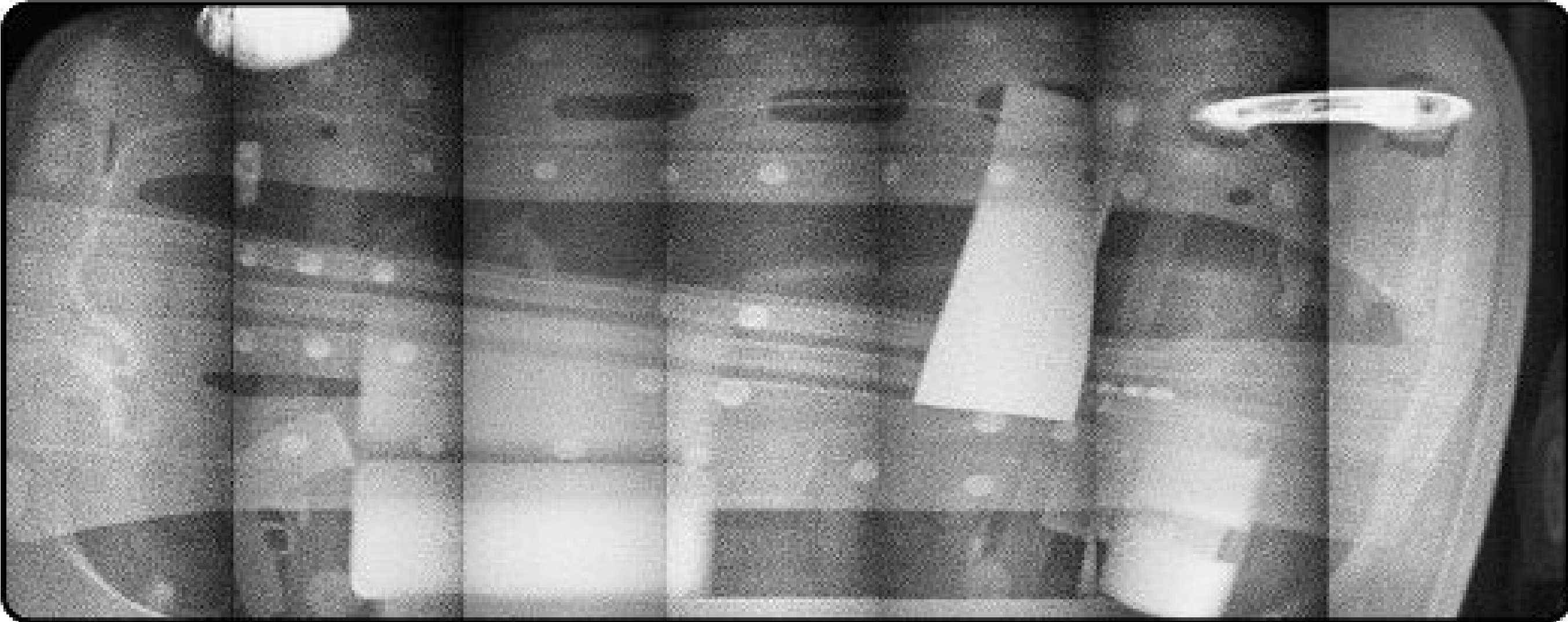
- 4-6 hours battery life | 1 battery bay
- 2 batteries included w/ every PX Unit
- 110/220V AC 1-Bay Rapid Charger

DIMENSIONS FOR ALL PX SERIES

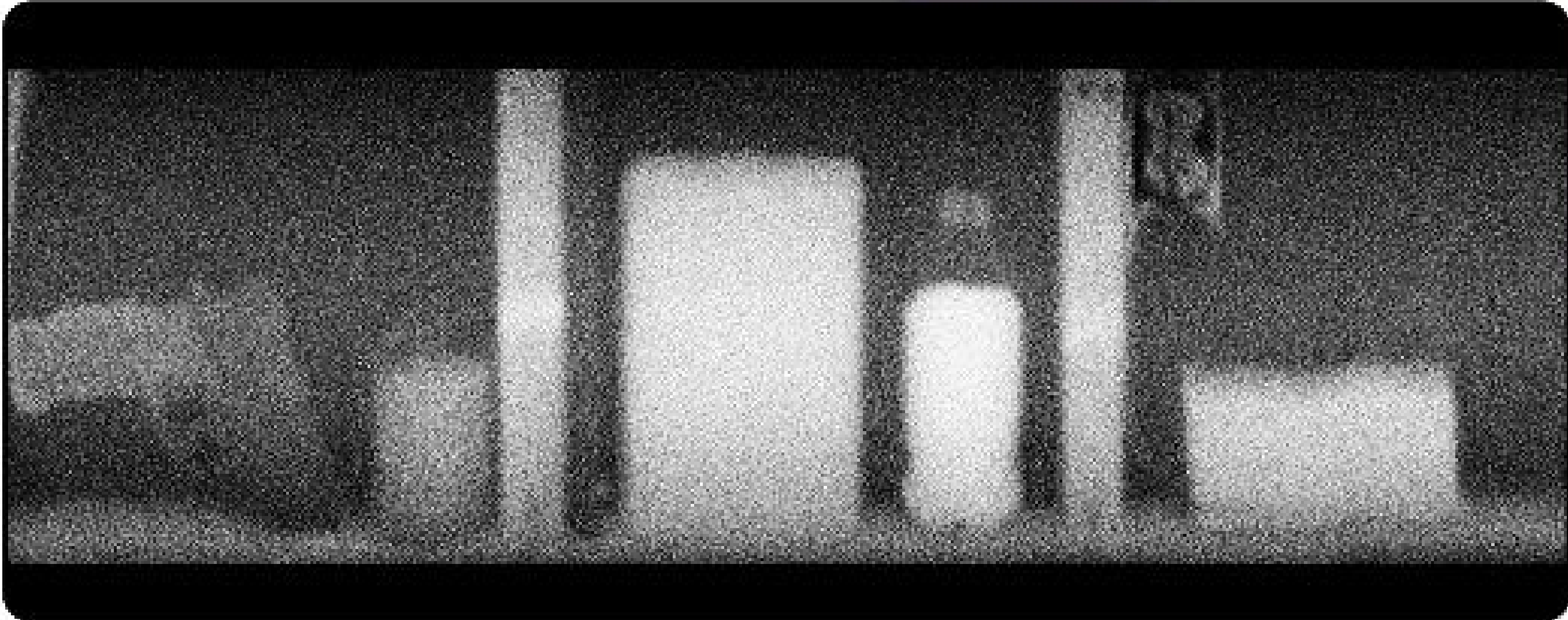
- Length: 21.1 cm (8.3 in)
- Width: 28.2 cm (11.1 in)
- Height: 18.5 cm (7.3 in)



Advanced electronics platform that boosts X-ray system *precision, storage, and speed*, delivering faster, higher-quality insights than ever before.



CAR DOOR - LEFT TO RIGHT: GUN, DRUGS, LEAD TRAP, LEAD WRAPPED DRUGS



WALL - LEFT TO RIGHT: GUN, EXPLOSIVES, DRUGS, LIQUID, LISTENING DEVICE AND CASH DETECTED